



# Red Mountain

BioChar, LLC

Eco Positive

Carbon Negative

Transforming Waste Into VALUABLE BIO PRODUCTS for a  
SUSTAINABLE FUTURE.



# Red Mountain BioChar



**Red Mountain** was started from the vision to convert waste to value & scale to make meaningful impact.



The most energy and capital-efficient designs in the industry, EBI, Puro-Earth Certified to meet the highest international standards.



Scalable technology for Efficient installation & ease of operation.

**Red Mountain  
Partners to provide  
scalable Carbon  
Removal Facilities &  
Related Market  
Support**



# Sawmills /Pulp & Paper



Residuals with diminished value generation due to industry shifts



BioChar used on their own land to assist with reforestation efforts



Full payback estimated within 1-2 years



BioChar and Carbon Credits are now Revenue streams.



Carbon credits being sold to replace revenue lost from industry changes





# Parallel Processing

Multiple production lines installed  
for maximum operation capacity and  
operational uptime

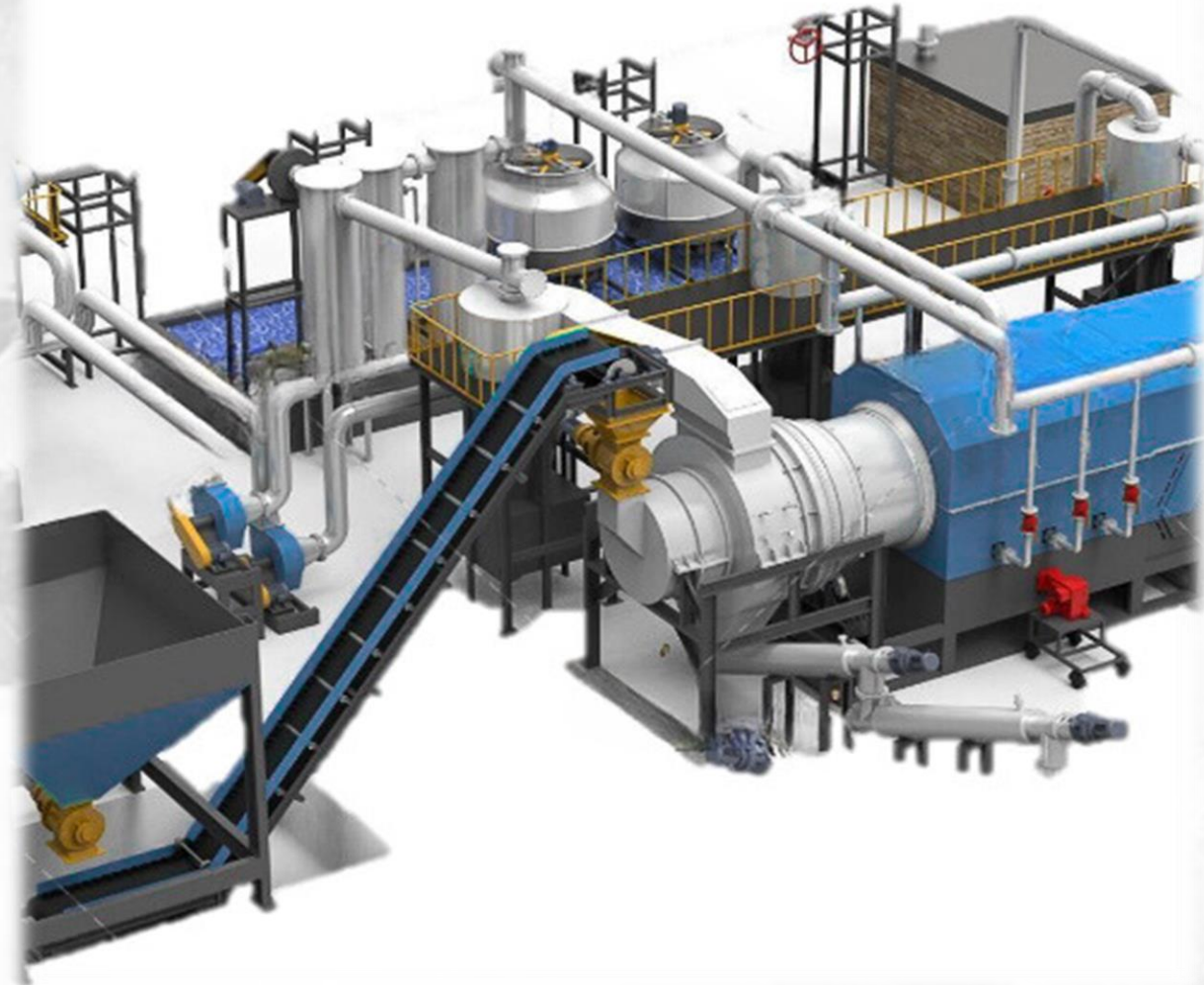
Centralized Location for Biomass  
Processing

Handling & Transportation costs  
dramatically reduced

Reduces dependence on external  
waste processors

Ease of Installation, Operation &  
Maintenance

Incorporates Waste-to-Value &  
expands Environmental and Financial  
Benefits across the Company's entire  
Operational footprint





# Pyrolysis Overview



Biomass that is thermally decomposed. Sequestering the Organic Carbon as charcoal



By-products like Wood Vinegar, Bio-Oil, and SynGas can be sold as additional revenue.



Extreme Heat 300°-900°C in a Low Oxygen Environment



All products have Renewable Energy potential, CO2 removal credit potential.



Carbon created with properties specified to Contracts for Various Industries



FINANCIALS





Joint Venture	Responsibilities	Equity Holding	% of Net Profit (\$48,875,000)
Sawmill / Site Location	Long term chip supply, local permit, equity capital	Yes	25% (\$12,218,750)
Red Mountain BioChar	Offtake, logistics, sales, marketing, branding, project execution & management	Yes	75% (\$36,656,250)



# Proforma – sawmill site

(425,000 t/yr woodchips)



Item	Amount
BioChar	\$53,125,000
Removal Credits	\$0.00
Total Sales Revenue	\$53,125,000



# Capital Expenses

Item	Amount
60 ton/hr System	\$18,900,000
Support Assembly Equipment	\$1,253,922
Pelletizing System	\$10,665,000
Loading & Shipping Equipment	\$1,220,000
Total Capital Expenditure	\$32,038,923



# Proforma ROI Sawmill site



<b>Capital Expenditure</b>	<b>\$32,038,923</b>	<b>Gross Profit</b>	<b>\$48,875,000</b>
<b>Revenue</b>	<b>\$53,125,000</b>	<b>IRR</b>	<b>138%</b>
<b>Operating Expenditure</b>	<b>\$4,250,000</b>	<b>ROI (over 7 yrs)</b>	<b>867%</b>



# CO<sub>2</sub> Removal Credits



Net emitting organizations purchase Carbon Dioxide Removal Credits (CORCs) to offset their carbon footprint.



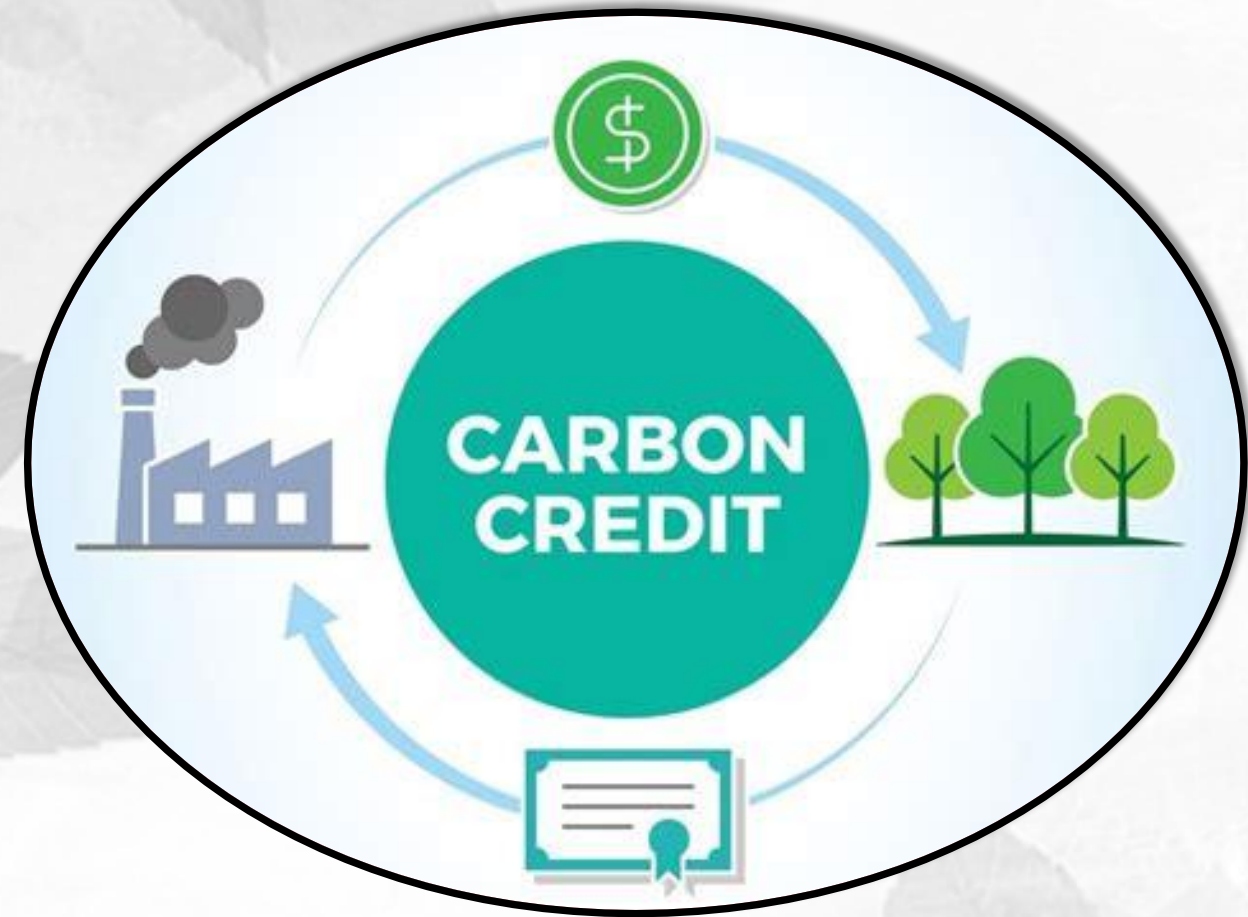
CORCs are measured in eCO<sub>2</sub>t - equivalent (metric) tonnes of CO<sub>2</sub> removed



This creates additional revenue buy marketing and selling the credits to Industrial Company's for carbon offset.



Intended as additional revenue stream for projects with Carbon Removal



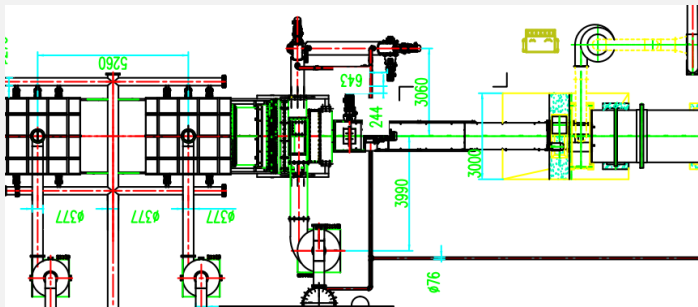


# Implementation

Red Mountain BioChar, LLC. works with you to determine the correct pyrolysis solution(s) for your needs and then aids in the construction, installation, operation, training, maintenance & support to ensure success for our partners & their clients

## 1 Engineer

Select appropriate unit(s) and determine equipment needs, costs, plan, and timeline.



## 2 Procure

Refine and perfect the plan, prepare facility, coordinate utilities, and arrange deliveries.



## 3 Construct

Guide on facility upgrades and equipment configuration.





# Facility Needs

**Power:** Requires 3-phase power. Wi-Fi access is needed for remote operation.

**Fuel:** The machine jumpstarts with 2 Gas burners until operating temp is achieved and then switches to internal fuel produced

**Water:** Consumption from cooling is minimal, quenching is dependent on target moisture

**Footprint:** Site Location TBD within The Sawmill.





**Bill Wyatt – CEO** [Bill.Wyatt@redmountainBioChar.com](mailto:Bill.Wyatt@redmountainBioChar.com)

+1 (903) 513-2278

[RedmountainBioChar.com](http://RedmountainBioChar.com)

